

MONA OFFSHORE WIND PROJECT

Environmental Statement

Volume 7, Annex 6.6: Tree survey and arboricultural impact assessment Part 8 - Appendix C (F02)

Deadline: 7

Application Reference: EN010137

Reference Number: MOCNS-J3303-RPS-10202

Document Reference: F7.6.6 F02

14 January 2025

F02



Image of an offshore wind farm

Document status

Version	Purpose of document	Authored by	Reviewed by	Approved by	Review date
F01	Application	RPS	Mona Offshore Wind Ltd	Mona Offshore Wind Ltd	Feb 2024
F02	Submission at Deadline 7	RPS	Mona Offshore Wind Ltd	Mona Offshore Wind Ltd	14 January 2025

Prepared by:

RPS

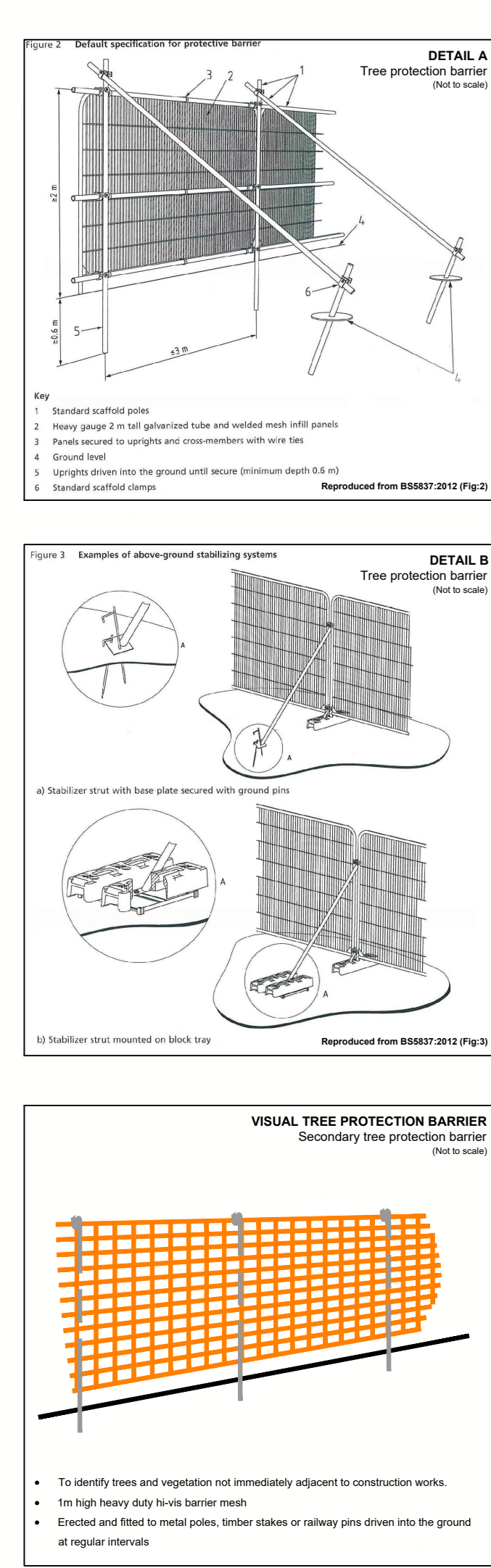
Prepared for:

Mona Offshore Wind Ltd.

Deadline 7 Changes

This document has been updated at Deadline 7 of the Mona Offshore Wind Project examination in order to reflect the change to the Order Limits, forming the Change Request, which was excepted by the Examining Authority on 19 December.

In addition, the updated survey information provided within the Tree Survey Clarification Note (REP3-049 to REP3-057) has been incorporated and minor cartographic errors which had resulted in some information not displaying properly have been corrected (these changes have not impacted the assessment presented in APP-160 and REP3-049).



LEGEND

Canopy Development Area (NO_PRL_BP_0162_DCO_Rn114)

Tree with numbered reference. Canopy spread and coloured BSS837:2012 tree quality category as shown below. # = Tree details estimate (inaccessible tree) * = Tree in off-site location

Vegetation group with numbered reference. Canopy extents and coloured BSS837:2012 tree quality category as shown below.

Hedge with numbered reference. Canopy extents and coloured BSS837:2012 tree quality category as shown below.

Woodland with numbered reference. Canopy extents and coloured BSS837:2012 tree quality category as shown below.

BS 5837:2012 Tree Quality Categories - Table 1

- Category A - High quality
- Category B - Moderate quality
- Category C - Low quality
- Category U - Unsuitable for retention

Tree or vegetation to be removed with numbered reference. Canopy spread and BSS837:2012 tree quality category.

Root protection area (RPA) Calculated in accordance with Section 4.6 - BSS837:2012

Precautionary Root protection area (RPA) previously added to un-surveyed trees. Shown for reference.

Tree protected by Conwy Council or Denbighshire Tree Preservation Order (TPO). Bracketed number reference relates to the TPO Schedule.

Veteran tree buffer (15 x stem Ø) (as per standing advice produced by Natural Resource Wales)

Designated Ancient Woodland and buffer (15m offset, as per Natural Resource Wales woodland inventory, via open data publication)

Arboricultural BRAG Assessment
 Based on quantitative and professional assessment. The ranking is defined as:

- Black: Significant arboreal asset within development;
- Red: High potential to constrain development;
- Amber: Moderate potential to constrain development; and
- Green: Low potential to constrain development

Construction Compound or Access Area
 Arboricultural constraint based on providing a construction exclusion zone (CEZ):

- Black: At all times, compound should avoid entering this area;
- Red: In nearly all circumstances, compound should avoid entering this area;
- Amber: In most circumstances, compound should avoid entering this area;
- Green: Little or no arboricultural constraint which would affect compound location.

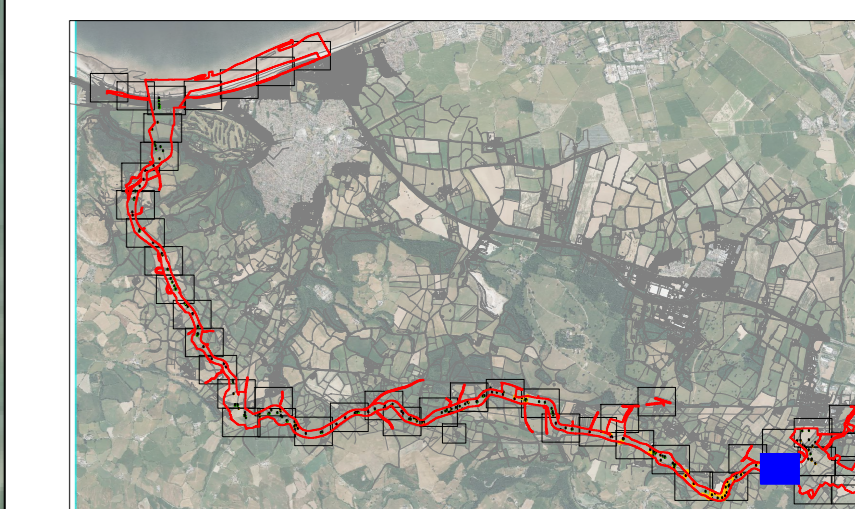
Cable Crossing Technique with numbered reference

- Trenchless
- Trenching / Trenchless
- Trenched

Indicative temporary protective fencing in accordance with Section 6.2 - BSS837:2012. See example, also shown within supporting report.

Indicative temporary visual warning barrier. See example detail, also shown within supporting report.

- NOTES:**
- Refer to RPS Tree Survey & Arboricultural Impact Assessment Report for further details.
 - Survey based on a visual inspection from the ground and is not intended as a full arboricultural inspection.
 - Plan produced in accordance with recommendations set out in BS 5837:2012 - 'Trees in Relation to design, demolition and construction'.
 - Due to the legal protection afforded to breeding birds vegetation removal should not take place during the bird nesting period, generally, although not restricted to March - August inclusive.
 - Survey based upon aerial photography, therefore tree locations should be deemed as approximate, and not digitally accurate.
 - Pedestrian/vehicular emergency access routes to be maintained at all times.
 - All protective fencing to be completed and approved by IPA / CA prior to commencement of any site works.
 - All works to conform with requirements of BS 5837:2012 - 'Tree Works'.
 - BS 5837:2012 - 'Trees in relation to design, demolition and construction'



Rev	Description	By	CB	Date



Drawing Number: 7139

Project Name:
MONA OFFSHORE WIND PROJECT

Drawing Title:
TREE AND HEDGEROW PROTECTION PLAN

Scale
Scale@A0: 1:500

Geodetic Information:
Datum: ETRS 1989
Projection: British National Grid

Data Sources: Client

Service Layer Credits: Esri, HERE, Garmin, Intermap, increment P Corp., GEBCO, USGS, FAO, NPS, NRCAN, GeoBase, IGN, Kadaster NL, Ordnance Survey, Esri Japan, METI, Esri China (Hong Kong), (c) OpenStreetMap contributors, and the GIS User Community

VER	DATE	DETAILS	BY	CHECK
01	Jan/24	Comment	RC	DC
06	Jan/25	Information	RC	DC

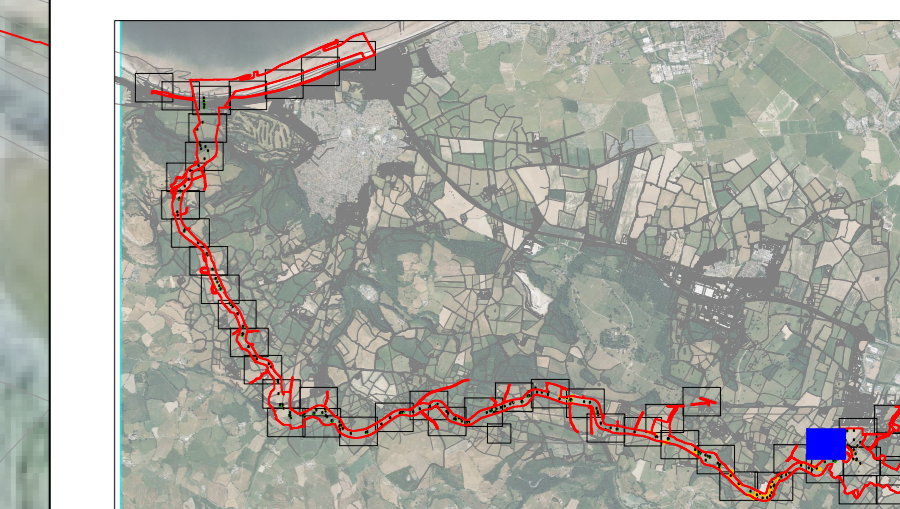
\\s01-rs-01\projects\3900\Series\USL3999 - Morgan and Mona CWP\Arboriculture\Tech\ACAD\Current\USL3999_800F_TFP_Cable_Route.dwg
 \\s01-rs-01\projects\3900\Series\USL3999 - Morgan and Mona CWP\Arboriculture\Tech\ACAD\Current\USL3999_800F_TFP_Cable_Route.dwg



LEGEND

Gravel Development Area (MO_PRL_SF_0162_DCO_Rn114)
 Tree with numbered reference. Canopy spread and coloured BS5837:2012 tree quality category as shown below.
 Tree details estimate (inaccessible tree)
 Tree in off-site location
 Vegetation group with numbered reference. Canopy extents and coloured BS5837:2012 tree quality category as shown below.
 Hedge with numbered reference. Canopy extents and coloured BS5837:2012 tree quality category as shown below.
 Woodland with numbered reference. Canopy extents and coloured BS5837:2012 tree quality category as shown below.
BS 5837:2012 Tree Quality Categories - Table 1
 Category A - High quality
 Category B - Moderate quality
 Category C - Low quality
 Category U - Unsuitable for retention
 Tree or vegetation to be removed with numbered reference. Canopy spread and BS5837:2012 tree quality category.
 Root protection area (RPA) Calculated in accordance with Section 4.6 - BS5837:2012
 Precautionary Root protection area (RPA) previously added to un-surveyed trees. Shown for reference.
 Tree protected by Conwy Council or Denbighshire Tree Preservation Order (TPO). Bracketed number reference relates to the TPO Schedule.
 Veteran tree buffer (15 x stem D) (as per standing advice produced by Natural Resource Wales)
 Designated Ancient Woodland and buffer (15m offset, as per Natural Resource Wales woodland inventory, via open data publication)
Arboricultural BRAG Assessment
 Based on quantitative and professional assessment. The ranking is defined as:
 Black: Significant arboreal asset within development;
 Red: High potential to constrain development;
 Amber: Moderate potential to constrain development; and
 Green: Low potential to constrain development
Construction Compound or Access Area
 Arboricultural constraint based on providing a construction exclusion zone (CEZ):
 Black: At all times, compound should avoid entering this area;
 Red: In nearly all circumstances, compound should avoid entering this area;
 Amber: In most circumstances, compound should avoid entering this area;
 Green: Little or no arboricultural constraint which would affect compound location.
Cable Crossing Technique with numbered reference
 Trenchless
 Trenching / Trenchless
 Trenched
 Indicative temporary protective fencing in accordance with Section 6.2 - BS5837:2012 See example, also shown within supporting report.
 Indicative temporary visual warning barrier. See example detail, also shown within supporting report.

- NOTES:**
- Refer to RPS Tree Survey & Arboricultural Impact Assessment Report for further details.
 - Survey based on a visual inspection from the ground and is not intended as a full arboricultural inspection.
 - Plan produced in accordance with recommendations set out in BS 5837:2012 - 'Trees in Relation to design, demolition and construction'.
 - Due to the legal protection afforded to breeding birds vegetation removal should not take place during the bird nesting period, generally, although not restricted to March - August inclusive.
 - Survey based upon aerial photography, therefore tree locations should be deemed as approximate, and not digitally accurate.
 - Pedestrian/vehicular emergency access routes to be maintained at all times.
 - All protective fencing to be completed and approved by LPA / CA prior to commencement of any site works.
 - All works to conform with requirements of BS 5837:2012 - 'Tree Works'.
 - BS 5837:2012 - 'Trees in relation to design, demolition and construction'.

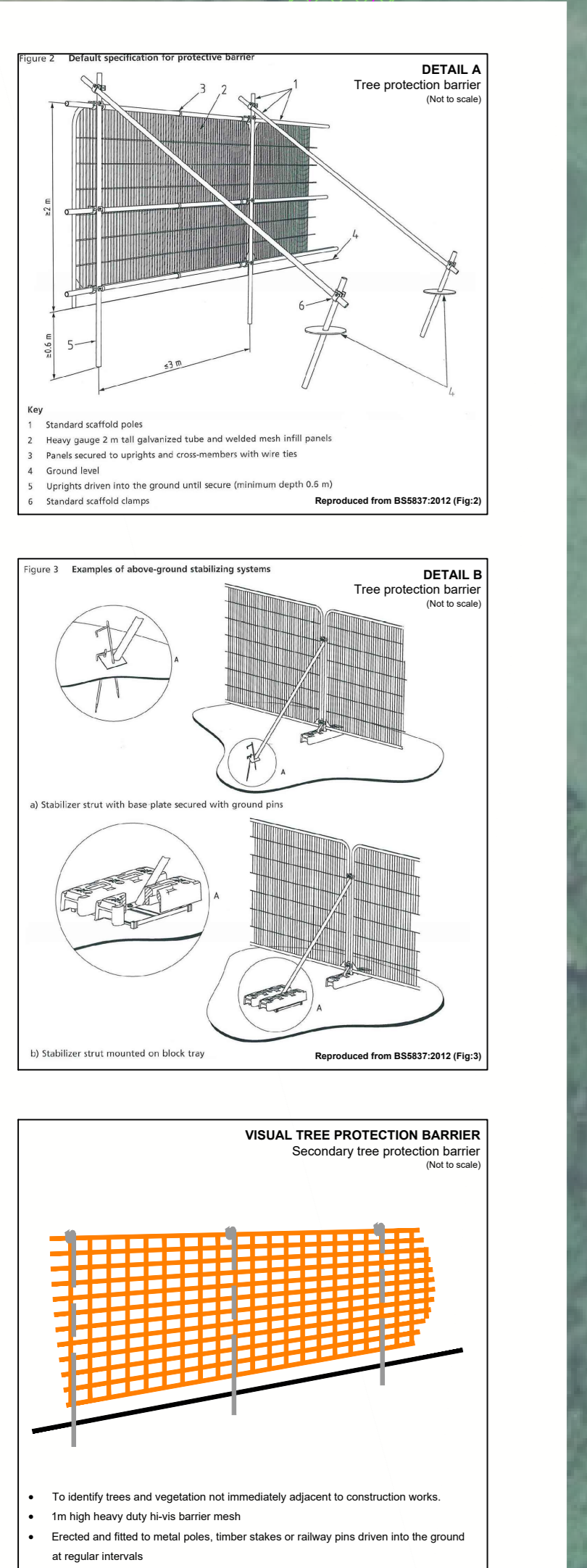


Rev	Description	By	CB	Date



Drawing Number: 7140

VER	DATE	DETAILS	BY	CHECK
01	Jan/24	Comment	RC	DC
06	Jan/25	Information	RC	DC



LEGEND

Onshore Development Area (MO_PHL_BP_01E_DCO_Ru11a)
 Tree with numbered reference. Canopy spread and coloured BS5837:2012 tree quality category as shown below.
 Vegetation group with numbered reference. Canopy extents and coloured BS5837:2012 tree quality category as shown below.
 Hedge with numbered reference. Canopy extents and coloured BS5837:2012 tree quality category as shown below.
 Woodland with numbered reference. Canopy extents and coloured BS5837:2012 tree quality category as shown below.

BS 5837:2012 Tree Quality Categories - Table 1
 Category A - High quality
 Category B - Moderate quality
 Category C - Low quality
 Category U - Unsuitable for retention

Tree or vegetation to be removed with numbered reference. Canopy spread and BS5837:2012 tree quality category.
 Root protection area (RPA) Calculated in accordance with Section 4.6 - BS5837:2012
 Precautionary Root protection area (RPA) previously added to un-surveyed trees. Shown for reference.
 Tree protected by Conwy Council or Denbighshire Tree Preservation Order (TPO). Bracketted number reference relates to the TPO Schedule.
 Veteran tree buffer (15 x stem ID) (as per standing advice produced by Natural Resource Wales)
 Designated Ancient Woodland and buffer (15m offset, as per Natural Resource Wales woodland inventory, via open data publication)

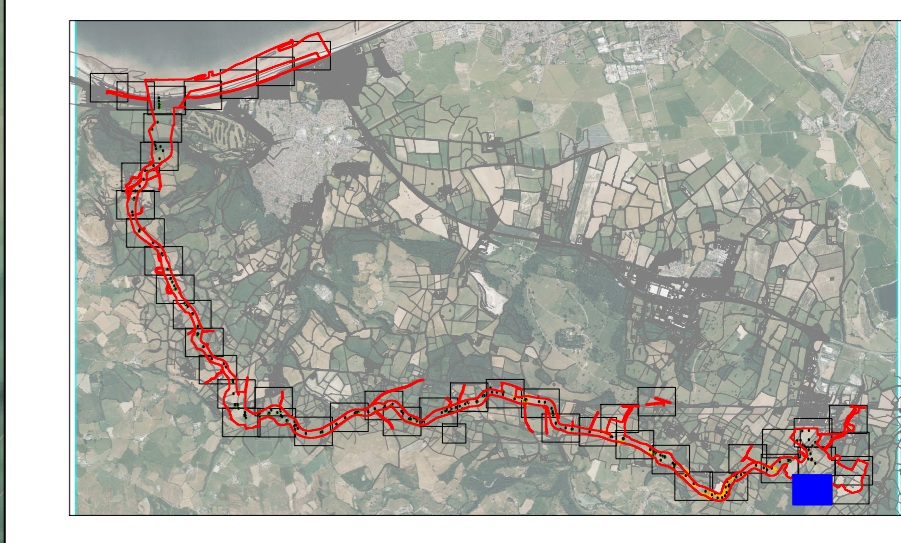
Arboricultural BRAG Assessment
 Based on quantitative and professional assessment. The ranking is defined as:
 Black: Significant arboreal asset within development;
 Red: High potential to constrain development;
 Amber: Moderate potential to constrain development; and
 Green: Low potential to constrain development

Arboricultural constraint based on providing a construction exclusion zone (CEZ)
 Black: At all times, compound should avoid entering this area;
 Red: In nearly all circumstances, compound should avoid entering this area;
 Amber: In most circumstances, compound should avoid entering this area;
 Green: Little or no arboricultural constraint which would affect compound location.

Cable Crossing Technique with numbered reference
 Trenchless
 Trenching / Trenchless
 Trenched

Indicative temporary protective fencing in accordance with Section 6.2 - BS5837:2012. See example, also shown within supporting report.
 Indicative temporary visual warning barrier. See example detail, also shown within supporting report.

NOTES:
 • Refer to RPS Tree Survey & Arboricultural Impact Assessment Report for further details.
 • Survey based on a visual inspection from the ground and is not intended as a full arboricultural inspection.
 • Plan produced in accordance with recommendations set out in BS 5837:2012 - 'Trees in relation to design, demolition and construction'.
 • Due to the legal protection afforded to breeding birds vegetation removal should not take place during the bird nesting period, generally, although not restricted to March - August inclusive.
 • Survey based upon aerial photography, therefore tree locations should be deemed as approximate, and not digitally accurate.
 • Pedestrian/vehicular emergency access routes to be maintained at all times.
 • All protective fencing to be completed and approved by IPA / CA prior to commencement of site works.
 • All works to conform with requirements of:
 BS 5837:2012 - 'Trees in relation to design, demolition and construction'



Rev	Description	By	CB	Date



Drawing Number: 7141

Project Name:
MONA OFFSHORE WIND PROJECT

Drawing Title:
TREE AND HEDGEROW PROTECTION PLAN

Scale
Scale@A0: 1:500

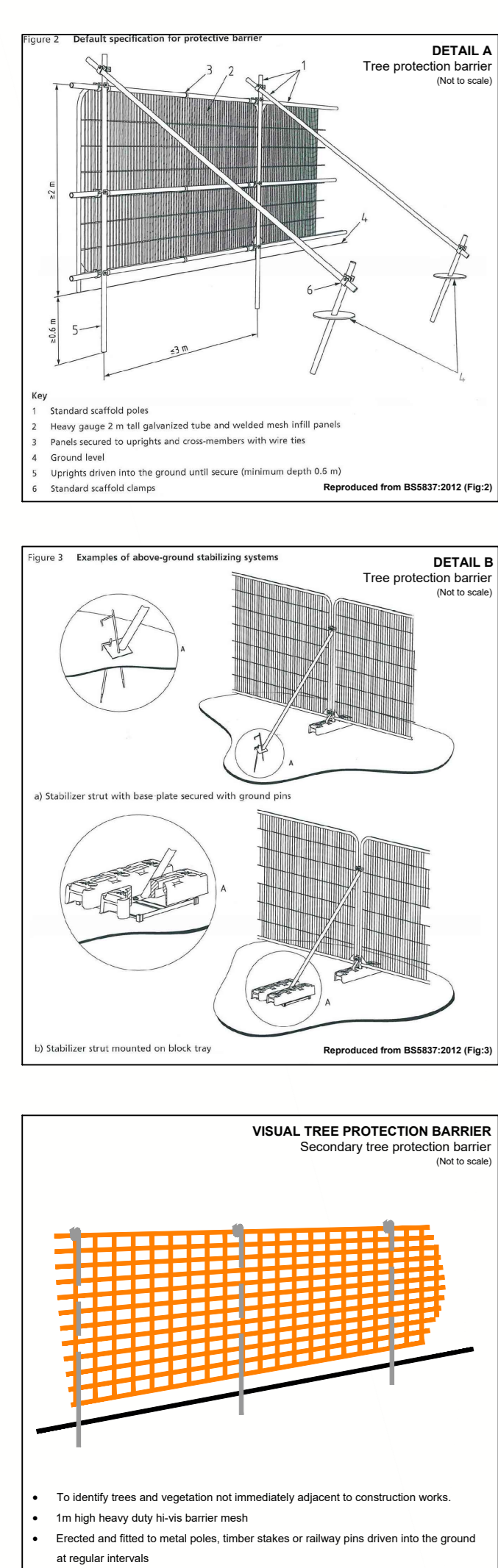
Geodetic Information:
Datum: ETRS 1989
Projection: British National Grid

Data Sources: Client

Service Layer Credits: Esri, HERE, Garmin, Intermap, increment P Corp., GEBCO, USGS, FAO, NPS, NRCAN, GeoBase, IGN, Kadaster NL, Ordnance Survey, Esri Japan, METI, Esri China (Hong Kong), (c) OpenStreetMap contributors, and the GIS User Community

VER	DATE	DETAILS	BY	CHECK
01	Jan/24	Comment	RC	DC
06	Jan/25	Information	RC	DC

\\s01-rs-01\projects\3900\Series\JL3999 - Morgan and Mona Offshore Wind\Technical\Current\JL3999_0000_TFP_Cable_Route.dwg
 \s01-rs-01\projects\3900\Series\JL3999 - Morgan and Mona Offshore Wind\Technical\Current\JL3999_0000_TFP_Cable_Route.dwg



LEGEND

Orange Development Area
(MO_PRL_BP_012_DCO_Ru114)

- Tree with numbered reference. Canopy spread and coloured BS5837:2012 tree quality category as shown below.
 - # = Tree details estimate (inaccessible tree)
 - = Tree in off site location
- Vegetation group with numbered reference. Canopy extents and coloured BS5837:2012 tree quality category as shown below.
- Hedge with numbered reference. Canopy extents and coloured BS5837:2012 tree quality category as shown below.
- Woodland with numbered reference. Canopy extents and coloured BS5837:2012 tree quality category as shown below.

BS 5837:2012 Tree Quality Categories - Table 1

- Category A - High quality
- Category B - Moderate quality
- Category C - Low quality
- Category U - Unsuitable for retention

- T1 Tree or vegetation to be removed with numbered reference. Canopy spread and BS5837:2012 tree quality category.
- Root protection area (RPA) Calculated in accordance with Section 4.6 - BS5837:2012
- Precautionary Root protection area (RPA) previously added to un-surveyed trees. Shown for reference.
- Tree protected by Conwy Council or Denbighshire Tree Preservation Order (TPO). Bracketed number reference relates to the TPO Schedule.
- Veteran tree buffer (15 x stem ID) (as per standing advice produced by Natural Resource Wales)
- Designated Ancient Woodland and buffer (15m offset, as per Natural Resource Wales woodland inventory, via open data publication)

Arboricultural BRAG Assessment
Based on quantitative and professional assessment. The ranking is defined as:

- Black: Significant arboreal asset within development;
- Red: High potential to constrain development;
- Amber: Moderate potential to constrain development; and
- Green: Low potential to constrain development

Construction Compound or Access Area
Arboricultural constraint based on providing a construction exclusion zone (CEZ):

- Black: At all times, compound should avoid entering this area;
- Red: In nearly all circumstances, compound should avoid entering this area;
- Amber: In most circumstances, compound should avoid entering this area;
- Green: Little or no arboricultural constraint which would affect compound location.

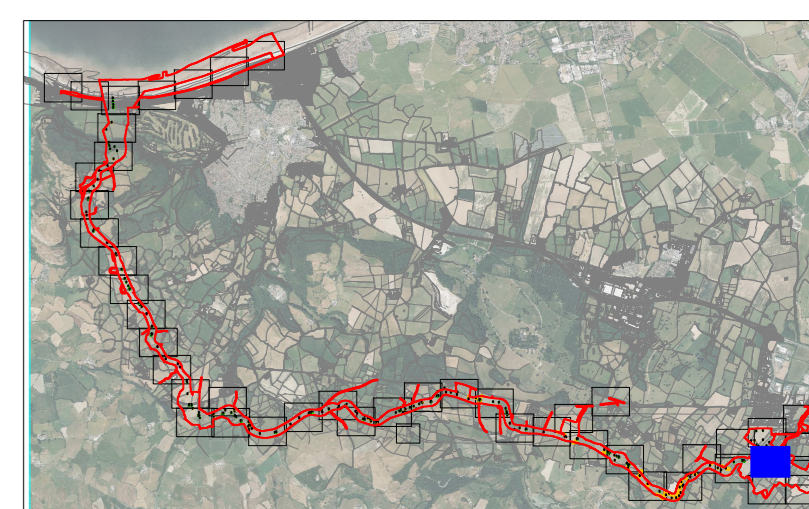
Cable Crossing Technique with numbered reference

- Trenchless
- Trenching / Trenchless
- Trenched

- Indicative temporary protective fencing in accordance with Section 6.2 - BS5837:2012. See example, also shown within supporting report.
- Indicative temporary visual warning barrier. See example detail, also shown within supporting report.

NOTES:

- Refer to RPS Tree Survey & Arboricultural Impact Assessment Report for further details.
- Survey based on a visual inspection from the ground and is not intended as a full arboricultural inspection.
- Plan produced in accordance with recommendations set out in BS 5837:2012 - 'Trees in Relation to design, demolition and construction'.
- Due to the legal protection afforded to breeding birds vegetation removal should not take place during the bird nesting period, generally, although not restricted to March - August inclusive.
- Survey based upon aerial photography, therefore tree locations should be deemed as approximate, and not digitally accurate.
- Pedestrian/vehicular emergency access routes to be maintained at all times.
- All protective fencing to be completed and approved by LPA / CA prior to commencement of any site works.
- All works to conform with requirements of BS 5837:2012 - 'Tree Works'.
- BS 5837:2012 - 'Trees in relation to design, demolition and construction'



Rev	Description	By	CB	Date



Drawing Number:
7142

Project Name:
MONA OFFSHORE WIND PROJECT

Drawing Title:
TREE AND HEDGEROW PROTECTION PLAN

Scale
Scale@A0: 1:500

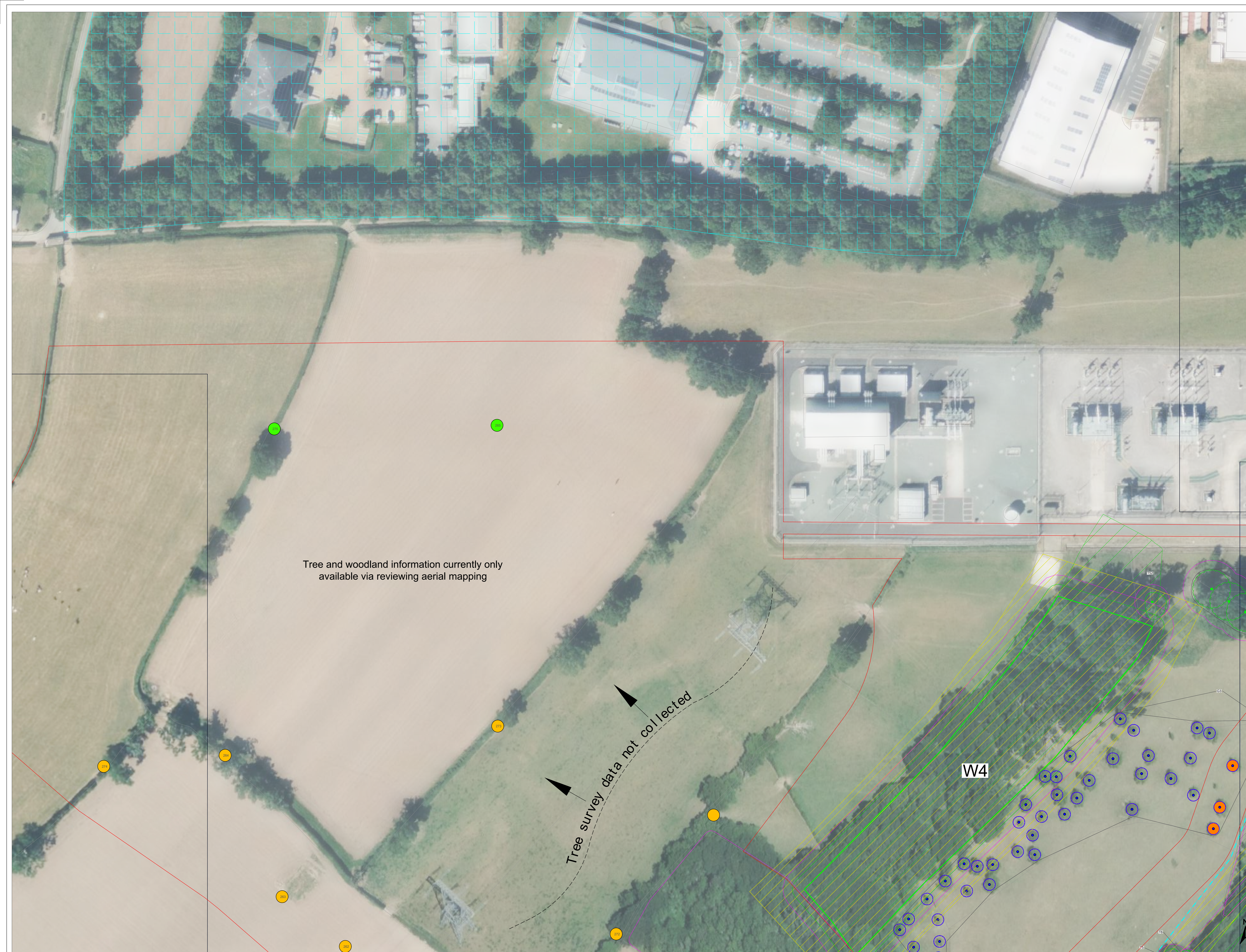
Geodetic Information:
Datum: ETRS 1989
Projection: British National Grid

Data Sources: Client

Service Layer Credits: Esri, HERE, Garmin, Intermap, increment P Corp., GEBCO, USGS, FAO, NPS, NRCAN, GeoBase, IGN, Kadaster NL, Ordnance Survey, Esri Japan, METI, Esri China (Hong Kong), (c) OpenStreetMap contributors, and the GIS User Community

VER	DATE	DETAILS	BY	CHECK
01	Jan/24	Comment	RC	DC
06	Jan/25	Information	RC	DC

\\sru01-01\projects\3900\Series\USL3999 - Morgan and Mona Offshore\Arboriculture\Tech\ACAD\Current\USL3999_0007_TFP_Cable Route.dwg
\\sru01-01\projects\3900\Series\USL3999 - Morgan and Mona Offshore\Arboriculture\Tech\ACAD\Current\USL3999_0007_TFP_Cable Route.dwg



Tree and woodland information currently only available via reviewing aerial mapping

Tree survey data not collected

W4

LEGEND

Orange Development Area (MO_PRL_BP_01E2_DCO_Ru11a)

- T1 Tree with numbered reference. Canopy spread and coloured BS5837:2012 tree quality category as shown below.
 - # = Tree details estimate (inaccessible tree)
 - = Tree in off site location
- G1 Vegetation group with numbered reference. Canopy extents and coloured BS5837:2012 tree quality category as shown below.
- H1 Hedge with numbered reference. Canopy extents and coloured BS5837:2012 tree quality category as shown below.
- W1 Woodland with numbered reference. Canopy extents and coloured BS5837:2012 tree quality category as shown below.

BS 5837:2012 Tree Quality Categories - Table 1

- Category A - High quality
- Category B - Moderate quality
- Category C - Low quality
- Category U - Unsuitable for retention

- T1 Tree or vegetation to be removed with numbered reference. Canopy spread and BS5837:2012 tree quality category.
- Root protection area (RPA) Calculated in accordance with Section 4.6 - BS5837:2012
- Precautionary Root protection area (RPA) previously added to un-surveyed trees. Shown for reference.
- Tree protected by Conwy Council or Denbighshire Tree Preservation Order (TPO). Bracketed number reference relates to the TPO Schedule.
- Veteran tree buffer (15 x stem Ø) (as per standing advice produced by Natural Resource Wales)
- Designated Ancient Woodland and buffer (15m offset, as per Natural Resource Wales woodland inventory, via open data publication)

Arboricultural BRAG Assessment
Based on quantitative and professional assessment. The ranking is defined as:

- Black: Significant arboreal asset within development;
- Red: High potential to constrain development;
- Amber: Moderate potential to constrain development; and
- Green: Low potential to constrain development

Construction Compound or Access Area
Arboricultural constraint based on providing a construction exclusion zone (CEZ):

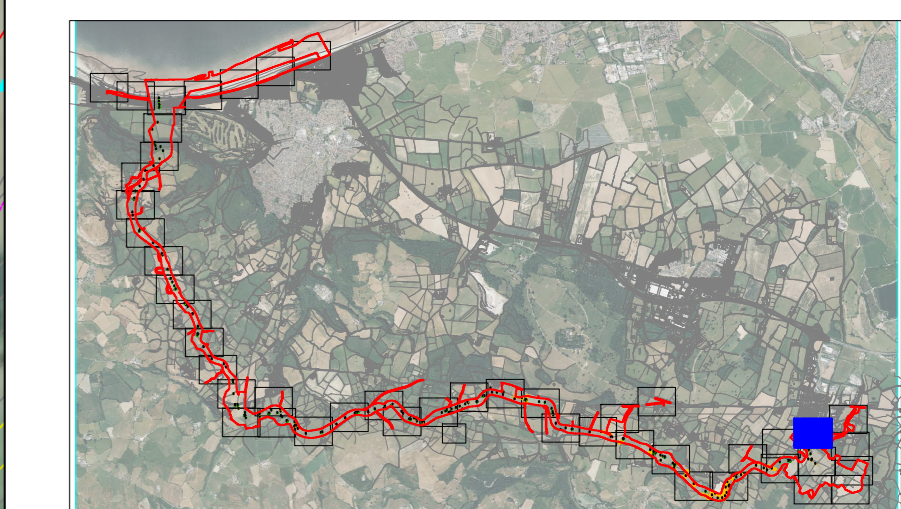
- Black: At all times, compound should avoid entering this area;
- Red: In nearly all circumstances, compound should avoid entering this area;
- Amber: In most circumstances, compound should avoid entering this area;
- Green: Little or no arboricultural constraint which would affect compound location.

Cable Crossing Technique with numbered reference

- Trenchless
- Trenching / Trenchless
- Trenched

- Indicative temporary protective fencing in accordance with Section 6.2 - BS5837:2012. See example, also shown within supporting report.
- Indicative temporary visual warning barrier. See example detail, also shown within supporting report.

- NOTES:
- Refer to RPS Tree Survey & Arboricultural Impact Assessment Report for further details.
 - Survey based on a visual inspection from the ground and is not intended as a full arboricultural inspection.
 - Plan produced in accordance with recommendations set out in BS 5837:2012 - 'Trees in Relation to design, demolition and construction'.
 - Due to the legal protection afforded to breeding birds vegetation removal should not take place during the bird nesting period, generally, although not restricted to, March - August inclusive.
 - Survey based upon aerial photography, therefore tree locations should be deemed as approximate, and not digitally accurate.
 - Pedestrian / vehicular emergency access routes to be maintained at all times.
 - All protective fencing to be completed and approved by LPA / CA prior to commencement of any site works.
 - All works to conform with requirements of: BS 5837:2012 - 'Trees in Relation to design, demolition and construction'



Rev	Description	By	CB	Date



Drawing Number:
7143

Project Name:
MONA OFFSHORE WIND PROJECT

Drawing Title:
TREE AND HEDGEROW PROTECTION PLAN

Scale
Scale@A0: 1:500
0 50m

Geodetic Information:
Datum: ETRS 1989
Projection: British National Grid

Data Sources: Client

Service Layer Credits: Esri, HERE, Garmin, Intermap, increment P Corp., GEBCO, USGS, FAO, NPS, NRCAN, GeoBase, IGN, Kadaster NL, Ordnance Survey, Esri Japan, METI, Esri China (Hong Kong), (c) OpenStreetMap contributors, and the GIS User Community

VER	DATE	DETAILS	BY	CHECK
01	Jan/24	Comment	RC	DC
06	Jan/25	Information	RC	DC

\\s01-rs-01\projects\3900\Series\JL3999 - Morgan and Mona CWP\Arboriculture\Tech\ACAD\Current\JL3999_000\TTP\Cable.Route.dwg
\\s01-rs-01\projects\3900\Series\JL3999 - Morgan and Mona CWP\Arboriculture\Tech\ACAD\Current\JL3999_000\TTP\Cable.Route.dwg



LEGEND

Grass Development Area
(MO_PRL_SF_012_DCO_Rn114)

T1 Tree with numbered reference.
Canopy spread and coloured BS5837:2012 tree quality category as shown below.
= Tree details estimate (inaccessible tree)
• = Tree in off site location

G1 Vegetation group with numbered reference.
Canopy extents and coloured BS5837:2012 tree quality category as shown below.

H1 Hedge with numbered reference.
Canopy extents and coloured BS5837:2012 tree quality category as shown below.

W1 Woodland with numbered reference.
Canopy extents and coloured BS5837:2012 tree quality category as shown below.

BS 5837:2012 Tree Quality Categories - Table 1

- Category A - High quality
- Category B - Moderate quality
- Category C - Low quality
- Category U - Unsuitable for retention

T1 Tree or vegetation to be removed with numbered reference. Canopy spread and BS5837:2012 tree quality category.

Root protection area (RPA)
Calculated in accordance with Section 4.6 - BS5837:2012

Precautionary Root protection area (RPA) previously added to un-surveyed trees. Shown for reference.

Tree protected by Conwy Council or Denbighshire Tree Preservation Order (TPO). Bracketed number reference relates to the TPO Schedule.

Veteran tree buffer (15 x stem Ø) (as per standing advice produced by Natural Resource Wales)

Designated Ancient Woodland and buffer (15m offset, as per Natural Resource Wales woodland inventory, via open data publication)

Arboricultural BRAG Assessment
Based on quantitative and professional assessment. The ranking is defined as:

- Black: Significant arboreal asset within development;
- Red: High potential to constrain development;
- Amber: Moderate potential to constrain development; and
- Green: Low potential to constrain development

Construction Compound or Access Area
Arboricultural constraint based on providing a construction exclusion zone (CEZ):

- Black: At all times, compound should avoid entering this area;
- Red: In nearly all circumstances, compound should avoid entering this area;
- Amber: In most circumstances, compound should avoid entering this area;
- Green: Little or no arboricultural constraint which would affect compound location.

Cable Crossing Technique with numbered reference

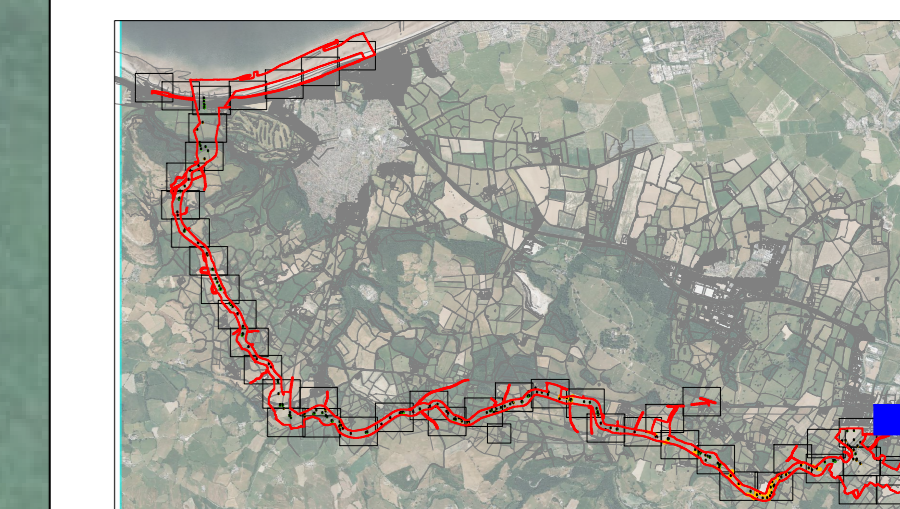
- Trenchless
- Trenching / Trenchless
- Trenched

Indicative temporary protective fencing in accordance with Section 6.2 - BS5837:2012. See example, also shown within supporting report.

Indicative temporary visual warning barrier. See example detail, also shown within supporting report.

NOTES:

- Refer to RPS Tree Survey & Arboricultural Impact Assessment Report for further details.
- Survey based on a visual inspection from the ground and is not intended as a full arboricultural inspection.
- Plan produced in accordance with recommendations set out in BS 5837:2012 - 'Trees in Relation to design, demolition and construction'.
- Due to the legal protection afforded to breeding birds vegetation removal should not take place during the bird nesting period, generally, although not restricted to March - August inclusive.
- Survey based upon aerial photography, therefore tree locations should be deemed as approximate, and not digitally accurate.
- Pedestrian/vehicular emergency access routes to be maintained at all times.
- All protective fencing to be completed and approved by LPA / CA prior to commencement of any site works.
- All works to conform with requirements of BS 5837:2012 - 'Tree Works'.
- BS 5837:2012 - 'Trees in relation to design, demolition and construction'



Rev	Description	By	CB	Date



Drawing Number:
7144

Project Name:
MONA OFFSHORE WIND PROJECT

Drawing Title:
TREE AND HEDGEROW PROTECTION PLAN

Scale
Scale@A0: 1:500

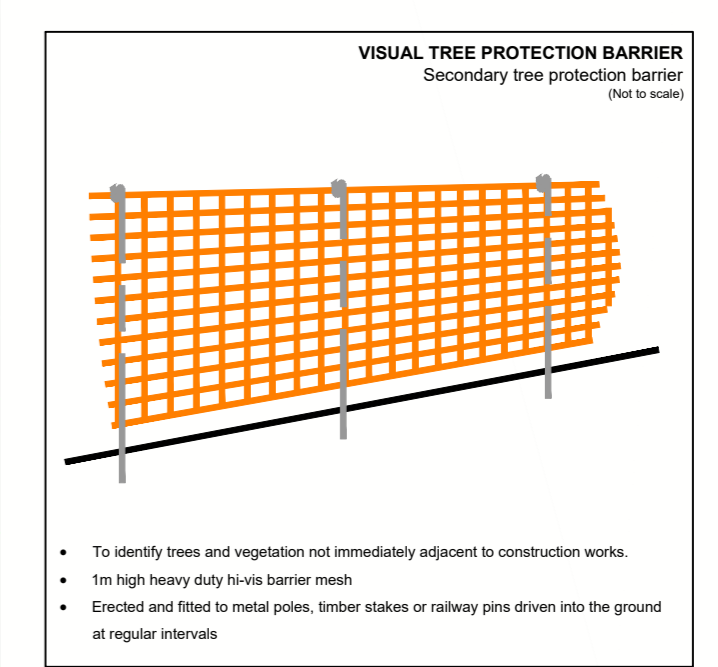
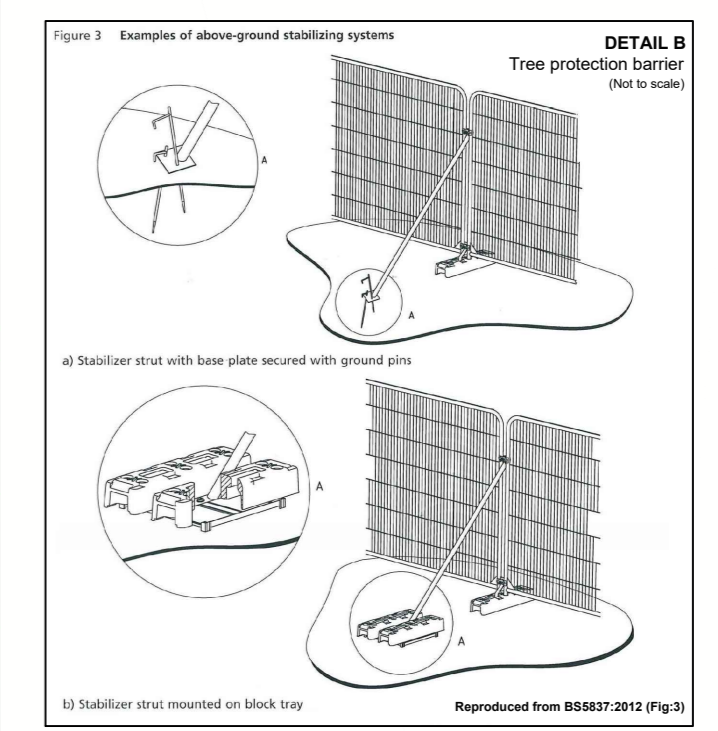
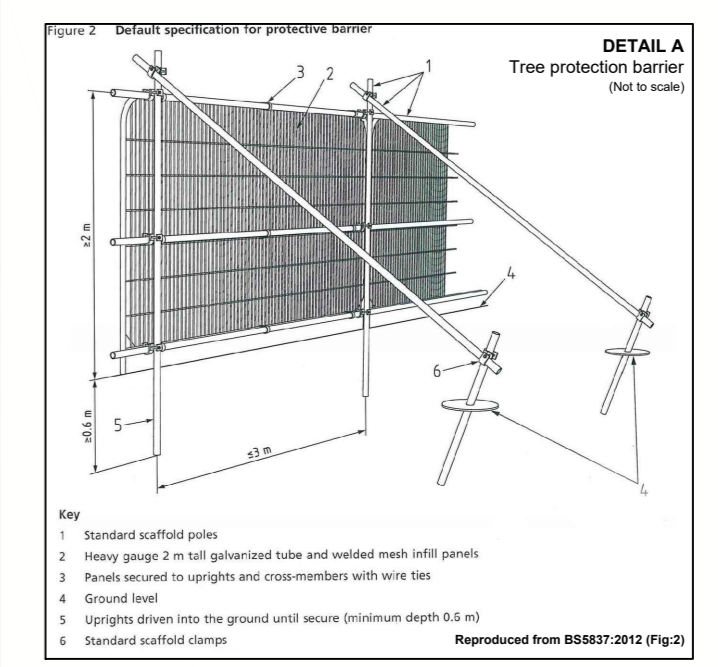
Geodetic Information:
Datum: ETRS 1989
Projection: British National Grid

Data Sources: Client

Service Layer Credits: Esri, HERE, Garmin, Intermap, increment P Corp., GEBCO, USGS, FAO, NPS, NRCAN, GeoBase, IGN, Kadaster NL, Ordnance Survey, Esri Japan, METI, Esri China (Hong Kong), (c) OpenStreetMap contributors, and the GIS User Community

VER	DATE	DETAILS	BY	CHECK
01	Jan/24	Comment	RC	DC
06	Jan/25	Information	RC	DC

\\s01-ifs-01\projects\3900_Series\JLS3999_Morgan and Monashore\Arboriculture\Tech\ACAD\Current\JLS3999_0007_TFP_CableRoute.dwg
\\s01-ifs-01\projects\3900_Series\JLS3999_Morgan and Monashore\Arboriculture\Tech\ACAD\Current\JLS3999_0007_TFP_CableRoute.dwg

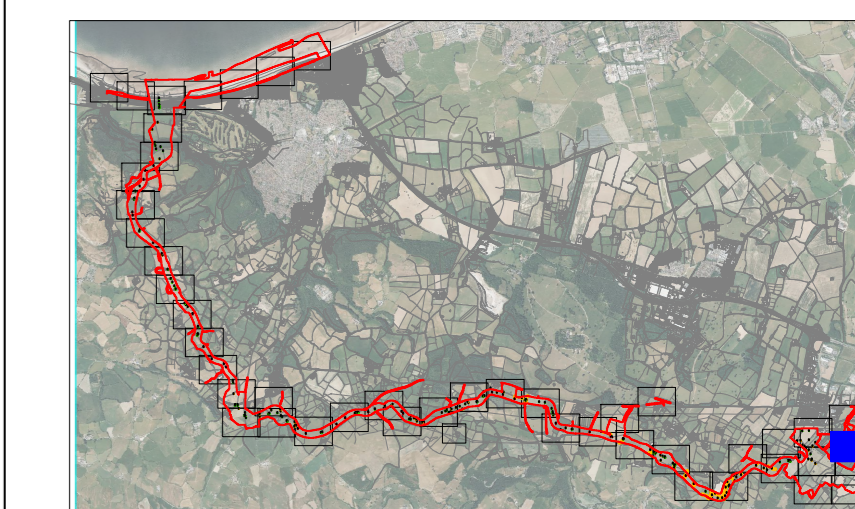


LEGEND

- Construction Development Area (M0, P01, P02, P03, P04, P05)
- Tree with numbered reference. Canopy spread and coloured BS5837:2012 tree quality category as shown below.
 - = Tree details estimate (inaccessible tree)
 - = Tree in site location
- Vegetation group with numbered reference. Canopy extents and coloured BS5837:2012 tree quality category as shown below.
- Hedge with numbered reference. Canopy extents and coloured BS5837:2012 tree quality category as shown below.
- Woodland with numbered reference. Canopy extents and coloured BS5837:2012 tree quality category as shown below.
- BS 5837:2012 Tree Quality Categories - Table 1**
 - Category A - High quality
 - Category B - Moderate quality
 - Category C - Low quality
 - Category U - Unsuitable for retention
- Tree or vegetation to be removed with numbered reference. Canopy spread and BS5837:2012 tree quality category.
- Root protection area (RPA) Calculated in accordance with Section 4.6 - BS5837:2012
- Precautionary Root protection area (RPA) previously added to un-surveyed trees. Shown for reference.
- Tree protected by Conwy Council or Denbighshire Tree Preservation Order (TPO). Bracketted number reference relates to the TPO Schedule.
- Veteran tree buffer (15 x stem Ø) (as per standing advice produced by Natural Resource Wales)
- Designated Ancient Woodland and buffer (15m offset, as per Natural Resource Wales woodland inventory, via open data publication)
- Arboricultural BRAG Assessment**
Based on quantitative and professional assessment. The ranking is defined as:
 - Black: Significant arboreal asset within development;
 - Red: High potential to constrain development;
 - Amber: Moderate potential to constrain development; and
 - Green: Low potential to constrain development
- Construction Compound or Access Area**
Arboricultural constraint based on providing a construction exclusion zone (CEZ):
 - Black: At all times, compound should avoid entering this area;
 - Red: In nearly all circumstances, compound should avoid entering this area;
 - Amber: In most circumstances, compound should avoid entering this area;
 - Green: Little or no arboricultural constraint which would affect compound location.
- Cable Crossing Technique with numbered reference**
 - Trenchless
 - Trenching / Trenchless
 - Trenched
- Indicative temporary protective fencing in accordance with Section 6.2 - BS5837:2012. See example, also shown within supporting report.
- Indicative temporary visual warning barrier. See example detail, also shown within supporting report.

NOTES:

- Refer to RPS Tree Survey & Arboricultural Impact Assessment Report for further details.
- Survey based on a visual inspection from the ground and is not intended as a full arboricultural inspection.
- Plan produced in accordance with recommendations set out in BS 5837:2012 - 'Trees in Relation to design, demolition and construction'.
- Due to the legal protection afforded to breeding birds vegetation removal should not take place during the bird nesting period, generally, although not restricted to, March - August inclusive.
- Survey based upon aerial photography, therefore tree locations should be deemed as approximate, and not digitally accurate.
- Pedestrian/vehicular emergency access routes to be maintained at all times.
- All protective fencing to be completed and approved by IPA / CA prior to commencement of any site works.
- All works to conform with requirements of:
 - BS 3692:2015 - Tree Works
 - BS 5837:2012 - Trees in relation to design, demolition and construction



Rev	Description	By	CB	Date



Drawing Number:
7145

Project Name:
MONA OFFSHORE WIND PROJECT

Drawing Title:
TREE AND HEDGEROW PROTECTION PLAN

Scale:
Scale@A0: 1:500

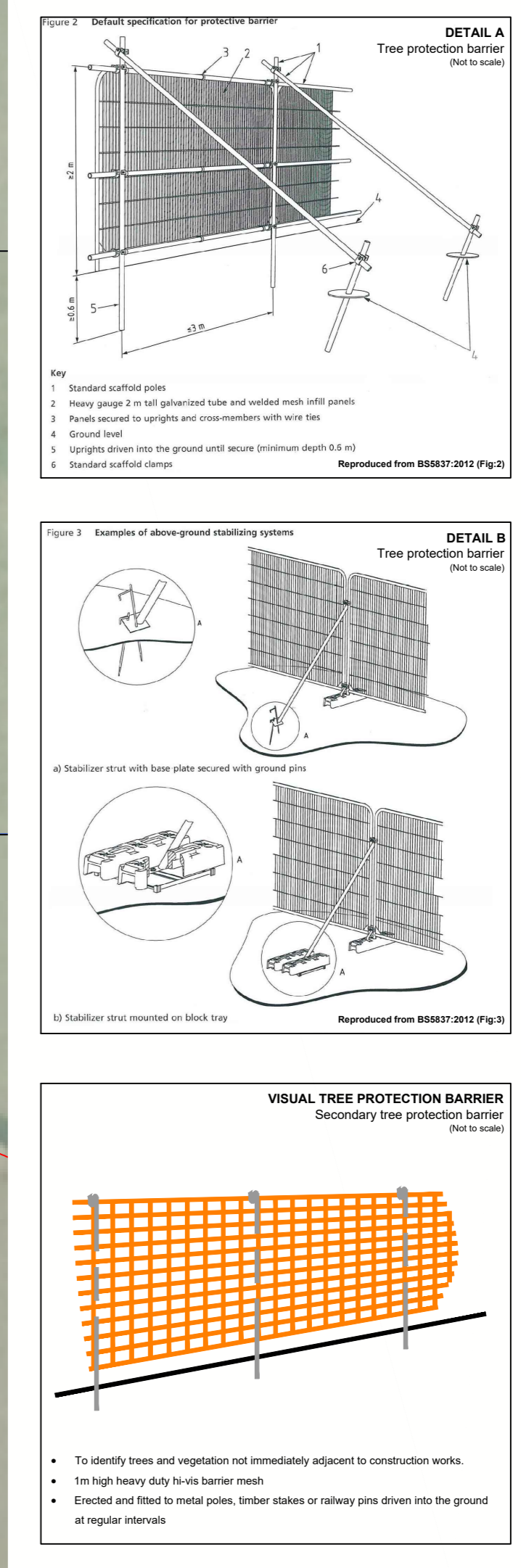
Geodetic Information:
Datum: ETRS 1989
Projection: British National Grid

Data Sources: Client

Service Layer Credits: Esri, HERE, Garmin, Intermap, increment P Corp., GEBCO, USGS, FAO, NPS, NRCAN, GeoBase, IGN, Kadaster NL, Ordnance Survey, Esri Japan, METI, Esri China (Hong Kong), (c) OpenStreetMap contributors, and the GIS User Community

VER	DATE	DETAILS	BY	CHECK
01	Jan/24	Comment	RC	DC
06	Jan/25	Information	RC	DC

\\s01-rs-01\projects\3900\Series\JLS3999 - Morgan and Mona Offshore\Arboriculture\Tech\ACAD\Current\JLS3999_0006_TFP_Cable_Route.dwg
 Visu@rs-01\projects\3900\Series\JLS3999 - Morgan and Mona Offshore\Arboriculture\Tech\ACAD\Current\JLS3999_0006_TFP_Cable_Route.dwg



- ### LEGEND
- Construction Development Area (MO_PRL_BP_012_DCO_Ru11a)
 - Tree with numbered reference. Canopy spread and coloured BS5837:2012 tree quality category as shown below.
 - # = Tree details estimate (inaccessible tree)
 - = Tree in site location
 - Vegetation group with numbered reference. Canopy extents and coloured BS5837:2012 tree quality category as shown below.
 - Hedgerow with numbered reference. Canopy extents and coloured BS5837:2012 tree quality category as shown below.
 - Woodland with numbered reference. Canopy extents and coloured BS5837:2012 tree quality category as shown below.
 - BS 5837:2012 Tree Quality Categories - Table 1
 - Category A - High quality
 - Category B - Moderate quality
 - Category C - Low quality
 - Category U - Unsuitable for retention
 - Tree or vegetation to be removed with numbered reference. Canopy spread and BS5837:2012 tree quality category.
 - Root protection area (RPA) Calculated in accordance with Section 4.6 - BS5837:2012
 - Precautionary Root protection area (RPA) previously added to un-surveyed trees. Shown for reference.
 - Tree protected by Conwy Council or Denbighshire Tree Preservation Order (TPO). Bracketed number reference relates to the TPO Schedule.
 - Veteran tree buffer (15 x stem Ø) (as per standing advice produced by Natural Resource Wales)
 - Designated Ancient Woodland and buffer (15m offset, as per Natural Resource Wales woodland inventory, via open data publication)

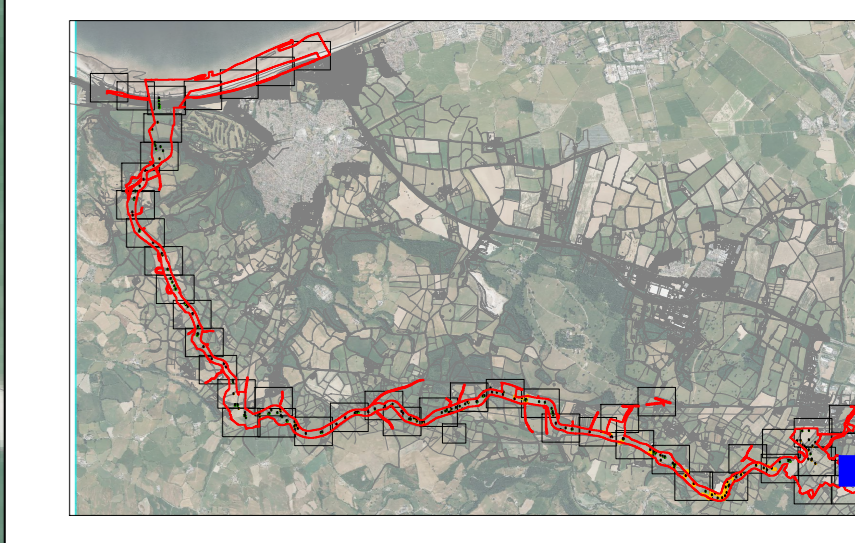
- ### Arboricultural BRAG Assessment
- Based on quantitative and professional assessment. The ranking is defined as:
- Black: Significant arboreal asset within development;
 - Red: High potential to constrain development;
 - Amber: Moderate potential to constrain development; and
 - Green: Low potential to constrain development

- ### Construction Compound or Access Area
- Arboricultural constraint based on providing a construction exclusion zone (CEZ):
- Black: At all times, compound should avoid entering this area;
 - Red: In nearly all circumstances, compound should avoid entering this area;
 - Amber: In most circumstances, compound should avoid entering this area;
 - Green: Little or no arboricultural constraint which would affect compound location.

- ### Cable Crossing Technique with numbered reference
- Trenchless
 - Trenching / Trenchless
 - Trenched

- Indicative temporary protective fencing in accordance with Section 6.2 - BS5837:2012. See example, also shown within supporting report.
- Indicative temporary visual warning barrier. See example detail, also shown within supporting report.

- ### NOTES:
- Refer to RPS Tree Survey & Arboricultural Impact Assessment Report for further details.
 - Survey based on a visual inspection from the ground and is not intended as a full arboricultural inspection.
 - Plan produced in accordance with recommendations set out in BS 5837:2012 - 'Trees in Relation to design, demolition and construction'.
 - Due to the legal protection afforded to breeding birds vegetation removal should not take place during the breeding period, generally, although not restricted to March - August inclusive.
 - Survey based upon aerial photography, therefore tree locations should be deemed as approximate, and not digitally accurate.
 - Pedestrian/vehicular emergency access routes to be maintained at all times.
 - All protective fencing to be completed and approved by IPA/CA prior to commencement of site works.
 - All works to conform with requirements of BS 5837:2012 - 'Trees in Relation to design, demolition and construction'.



Rev	Description	By	CB	Date



Drawing Number: 7146

VER	DATE	DETAILS	BY	CHECK
01	Jan/24	Comment	RC	DC
06	Jan/25	Information	RC	DC

Project Name: MONA OFFSHORE WIND PROJECT

Drawing Title: TREE AND HEDGEROW PROTECTION PLAN

Scale: Scale@A0: 1:500

Geodetic Information: Datum: ETRS 1989 Projection: British National Grid

Data Sources: Client

Service Layer Credits: Esri, HERE, Garmin, Intermap, increment P Corp., GEBCO, USGS, FAO, NPS, NRCAN, GeoBase, IGN, Kadaster NL, Ordnance Survey, Esri Japan, METI, Esri China (Hong Kong), (c) OpenStreetMap contributors, and the GIS User Community

\\nas01\p\projects\3900\Serial\USL3999_Morgan and Mona Offshore\Arboriculture\Tech\ACAD\Current\USL3999_0000_TFP_Cable Route.dwg



LEGEND

Orange Development Area (MO_PRL_BP_0102_DCO_Ren114)

T1 Tree with numbered reference. Canopy spread and coloured BS5837:2012 tree quality category as shown below.
 # = Tree details estimate (inaccessible tree)
 * = Tree in off site location

G1 Vegetation group with numbered reference. Canopy extents and coloured BS5837:2012 tree quality category as shown below.

H1 Hedge with numbered reference. Canopy extents and coloured BS5837:2012 tree quality category as shown below.

W1 Woodland with numbered reference. Canopy extents and coloured BS5837:2012 tree quality category as shown below.

BS 5837:2012 Tree Quality Categories - Table 1

- Category A - High quality
- Category B - Moderate quality
- Category C - Low quality
- Category U - Unsuitable for retention

T1 Tree or vegetation to be removed with numbered reference. Canopy spread and BS5837:2012 tree quality category.

Root protection area (RPA) Calculated in accordance with Section 4.6 - BS5837:2012

Precautionary Root protection area (RPA) previously added to un-surveyed trees. Shown for reference.

Tree protected by Conwy Council or Denbighshire Tree Preservation Order (TPO). Bracketed number reference relates to the TPO Schedule.

Veteran tree buffer (15 x stem Ø) (as per standing advice produced by Natural Resource Wales)

Designated Ancient Woodland and buffer (15m offset, as per Natural Resource Wales woodland inventory, via open data publication)

Arboricultural BRAG Assessment
 Based on quantitative and professional assessment. The ranking is defined as:

- Black: Significant arboreal asset within development;
- Red: High potential to constrain development;
- Amber: Moderate potential to constrain development; and
- Green: Low potential to constrain development

Construction Compound or Access Area
 Arboricultural constraint based on providing a construction exclusion zone (CEZ):

- Black: At all times, compound should avoid entering this area;
- Red: In nearly all circumstances, compound should avoid entering this area;
- Amber: In most circumstances, compound should avoid entering this area;
- Green: Little or no arboricultural constraint which would affect compound location.

Cable Crossing Technique with numbered reference

- Trenchless
- Trenching / Trenchless
- Trenched

Indicative temporary protective fencing in accordance with Section 6.2 - BS5837:2012. See example, also shown within supporting report.

Indicative temporary visual warning barrier. See example detail, also shown within supporting report.

NOTES:

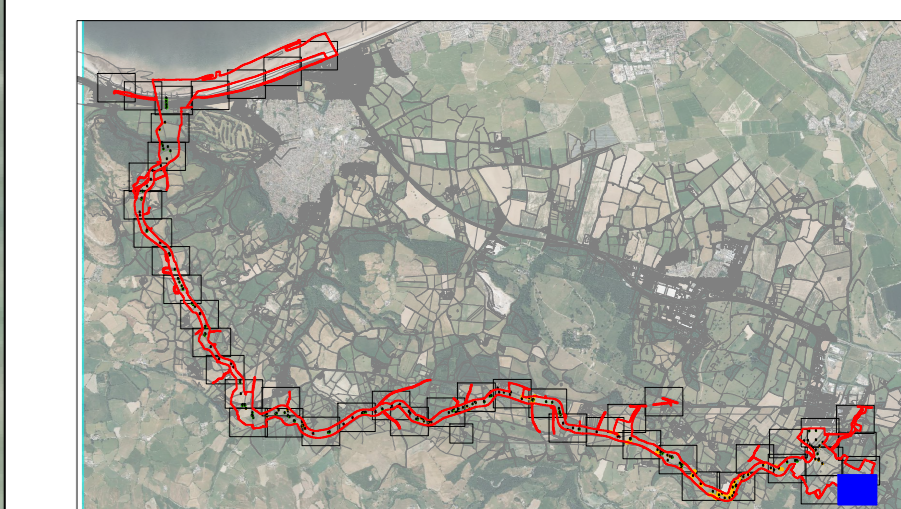
- Refer to RPS Tree Survey & Arboricultural Impact Assessment Report for further details.
- Survey based on a visual inspection from the ground and is not intended as a full arboricultural inspection.
- Plan produced in accordance with recommendations set out in BS 5837:2012 - 'Trees in Relation to design, demolition and construction'.
- Due to the legal protection afforded to breeding birds vegetation removal should not take place during the bird nesting period, generally, although not restricted to, March - August inclusive.
- Survey based upon aerial photography, therefore tree locations should be deemed as approximate, and not digitally accurate.
- Pedestrian/vehicular emergency access routes to be maintained at all times.
- All protective fencing to be completed and approved by LPA / CA prior to commencement of any site works.
- All works to conform with requirements of: BS 5837:2012 - Tree Works BS 5837:2012 - Trees in relation to design, demolition and construction

DETAIL A
 Tree protection barrier
 (see notes)

DETAIL B
 Tree protection barrier
 (see notes)

VISUAL TREE PROTECTION BARRIER
 Secondary tree protection barrier
 (see notes)

• To assist trees and vegetation not immediately adjacent to construction works.
 • To help heavy duty hoist barrier meet.
 • Drilled and fixed to metal poles, timber stakes or railway pins driven into the ground at regular intervals.



Rev	Description	By	CB	Date



Drawing Number:
7147